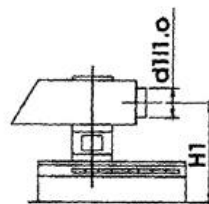
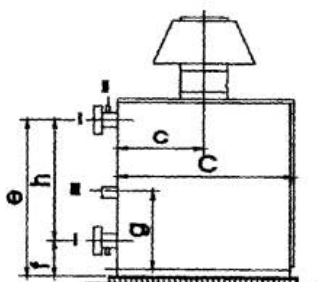
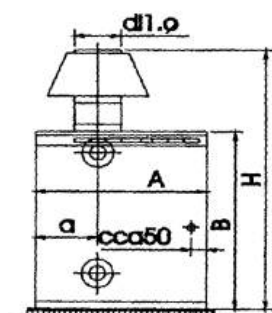


TECHNICAL DATA AND DIMENSIONS

BOILER SOKOL SUPER 90 TYP 70-200

Parameter	Unit	Type					
		70	85	100	125	150	200
Type designation		70	85	100	125	150	200
Rated boiler capacity	kW	70	85	100	125	150	200
Gauge pressure	MPa	0.5					
Output water temperature	°C	max. 110 / 90					
Input water temperature	°C	min. 65					
Flue-gas temperature	°C	170					
Underpressure at dm neck	Pa	10-15					
Water volume	L	110	130	140	225	195	310
Boiler weight	kg	350	390	460	550	670	800
Assembly opening w x h	m	1.5 x 2					
Power supplying system		230 V – 50 Hz					
Noise level	dB	65					
Max. inst. el. input	VA	130					
Efficiency	%	88 – 90					
Boiler category		I2H					
CO ₂	%	6.00 – 9.00					
CO (O ₂ =3%)	mg/m ³	30 – 45					
NO _x (O ₂ =3%)	mg/m ³	160					



Boiler with a horizontal interrupter for the flue-gas circuit, turnable to all sides.

TECHNICAL PARAMETERS

Type SUPER 90		70	85	100	125	150	200
Rated boiler capacity	kW	70	85	100	125	150	200
Nominal heat load	kW	77	94	111	137	165	220
Gas consumption	L	9,3	11,4	13,3	16,6	20	26,6
Gas consumption	H	8	9,7	11,4	14,2	17,1	22,8
Water volume	(l)	110	130	140	195	225	310
Weight	(kg)	350	390	460	550	670	800
Dimensions							
A	mm	750	750	900	900	900	1150
B	mm	1320	1320	1410	1410	1410	1410
C	mm	860	860	1080	1080	1080	1080
H	mm	1670	1670	1760	2050	2050	2140
a	mm	375	375	450	450	450	510
c	mm	370	370	480	480	480	510
d1 1 Ø	mm	180	180	220	250	250	300
e	mm	1170	1170	1210	1210	1210	1210
f	mm	265	265	305	305	305	305
g	mm	210	210	250	250	250	630
h	mm	905	905	905	905	905	905
Connections							
I hrdlo Js		65	65	65	65	65	65
II bez toku	(“)	1	1	1 1/4	1 1/4	1 1/2	1 1/2
III ZP	(“)	1	1	1	1	1 1/2	1 1/2
Type with a horizontal draught interrupter							
H1		1505	1505	1595	1775	1775	1885
d111 Ø		200	200	250	300	300	350