

TECHNICAL DATA

Note to the following table:

D - door

0,4,8 - pressure resistance

P - right

L - left

PD, PN, LN, LD - differentiation based on to the location of the air-conditioning elements TPU 300 and LPU 300 according to the scheme

S - equipped with the signalling and blocking device

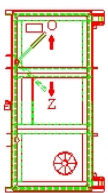
Signalling is delivered as special accessories for all door types and is always located in the upper part.

GAS RESISTANT					
Mark	Pressure resistance in MPa	Inner diameter in mm	Differentiation right / Left	Air-conditioning element and its location	Total weight in kg
D0-1	0,01	800 x 1900	identical	-	131,0
D0-1-P-S			right	-	131,0
D0-1-L-S			left	-	131,0
D0-1-PD-S			right	down	132,2
D0-1-PN-S			right	up	"
D0-1-LD-S			left	down	"
D0-1-LN-S			left	up	"
D0-2	0,01	1200 x 1900	identical	-	156,0
D0-2-P-S			right	-	"
D0-2-L-S			left	-	156,0
D0-2-PD-S			right	down	157,2
D0-2-PN-S			right	up	"
D0-2-LD-S			left	down	"
D0-2-LN-S			left	up	"

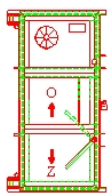
PRESSURE AND GAS RESISTANT					
Mark	Pressure resistance in MPa	Inner diameter in mm	Differentiation right / Left	Air-conditioning element and its location	Total weight in kg
D4-1	0,42	800 x 1900	identical	-	295,0
D4-1-P-S			right	-	"
D4-1-L-S			left	-	"
D4-1-PD-S			right	down	315,0
D4-1-PN-S			right	up	"
D4-1-LD-S			left	down	"
D4-1-LN-S			left	up	"
D4-2	0,42	1200 x 1900	identical	-	446,0
D4-2-P-S			right	-	"
D4-2-L-S			left	-	"
D4-2-PD-S			right	down	466,0
D4-2-PN-S			right	up	"
D4-2-LD-S			left	down	"
D4-2-LN-S			left	up	"

PRESSURE AND GAS RESISTANT					
Mark	Pressure resistance in MPa	Inner diameter in mm	Differentiation right / Left	Air-conditioning element and its location	Total weight in kg
D8-1	0,83	800 x 1900	identical	-	341,4
D8-1-P-S			right	-	"
D8-1-L-S			left	-	"
D8-1-PD-S			right	down	369,5
D8-1-PN-S			right	up	"
D8-1-LD-S			left	down	"
D8-1-LN-S			left	up	"
D8-2	0,83	1200 x 1900	identical	-	525,0
D8-2-P-S			right	-	"
D8-2-L-S			left	-	"
D8-2-PD-S			right	down	546,0
D8-2-PN-S			right	up	"
D8-2-LD-S			left	down	"
D8-2-LN-S			left	up	"

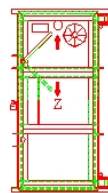
Representation of the door according to the location of the air-tconditioning elements LPU 300 or TPU 300.



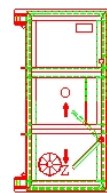
PD - Right door with TPU 300 down



LN - Left door with TPU 300 up



PN - Right door with TPU 300 up



LD - Left door with TPU 300 down